

# FOR LEASE

## "Paso Robles Business Park" 3200 Riverside Avenue #120 Paso Robles



### LEASE Information:

- +/- 2,092 SF  
Asking \$1800.00 per Month NNN + 4% Management  
Fee & Share of Electrical(NNN estimated at \$.07 per SF)

### Property Information:

- Office Space in Industrial Park
- Zoned for Many Uses
- Ample On-Site Parking

**Bryan Beckham**  
bbeckham@pacificarealestate.com  
DRE License #01072713

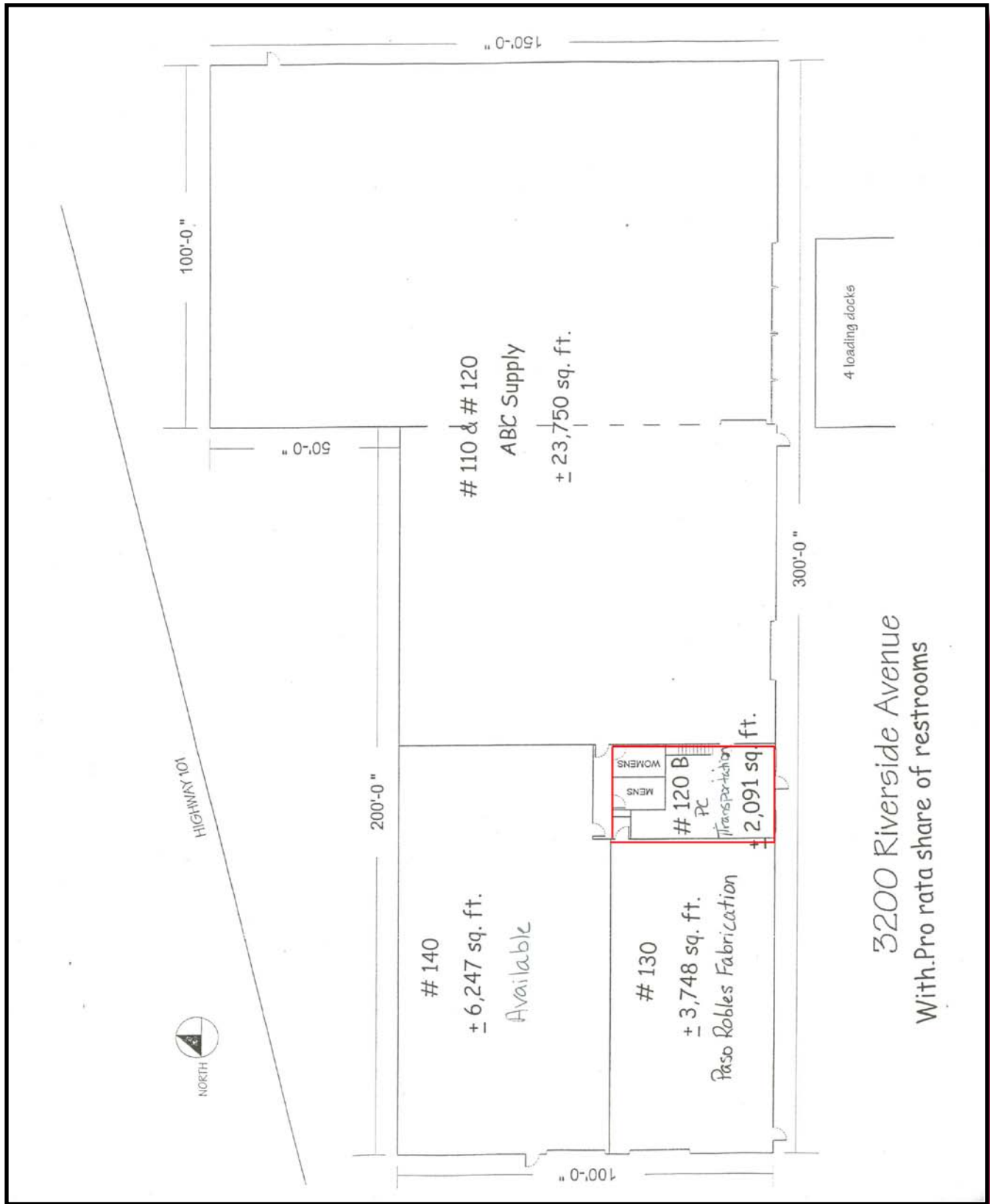
**Newlin Hastings**  
nhastings@pacificarealestate.com  
DRE License #00784461

**Corban Holland**  
cholland@pacificarealestate.com  
DRE License #01836854

**Michelle Dupre**  
mdupre@pacificarealestate.com  
DRE License #01253477



Information contained herein has been obtained from the owner of the property or from other sources deemed reliable. We have no reason to doubt its accuracy, but we do not guarantee it.



**PACIFICA**  
COMMERCIAL REALTY

Information contained herein has been obtained from the owner of the property or from other sources deemed reliable. We have no reason to doubt its accuracy, but we do not guarantee it.

504 First Street, Suite A, Paso Robles, CA 93446  
Santa Maria (805) 928-2800

Office: (805) 237-4040 Fax: (805) 237-4041  
Santa Barbara (805) 899-2400

[www.pcr-paso.com](http://www.pcr-paso.com)



Information contained herein has been obtained from the owner of the property or from other sources deemed reliable. We have no reason to doubt its accuracy, but we do not guarantee it.

504 First Street, Suite A, Paso Robles, CA 93446  
Santa Maria (805) 928-2800

Office: (805) 237-4040 Fax: (805) 237-4041  
Santa Barbara (805) 899-2400

[www.pcr-paso.com](http://www.pcr-paso.com)